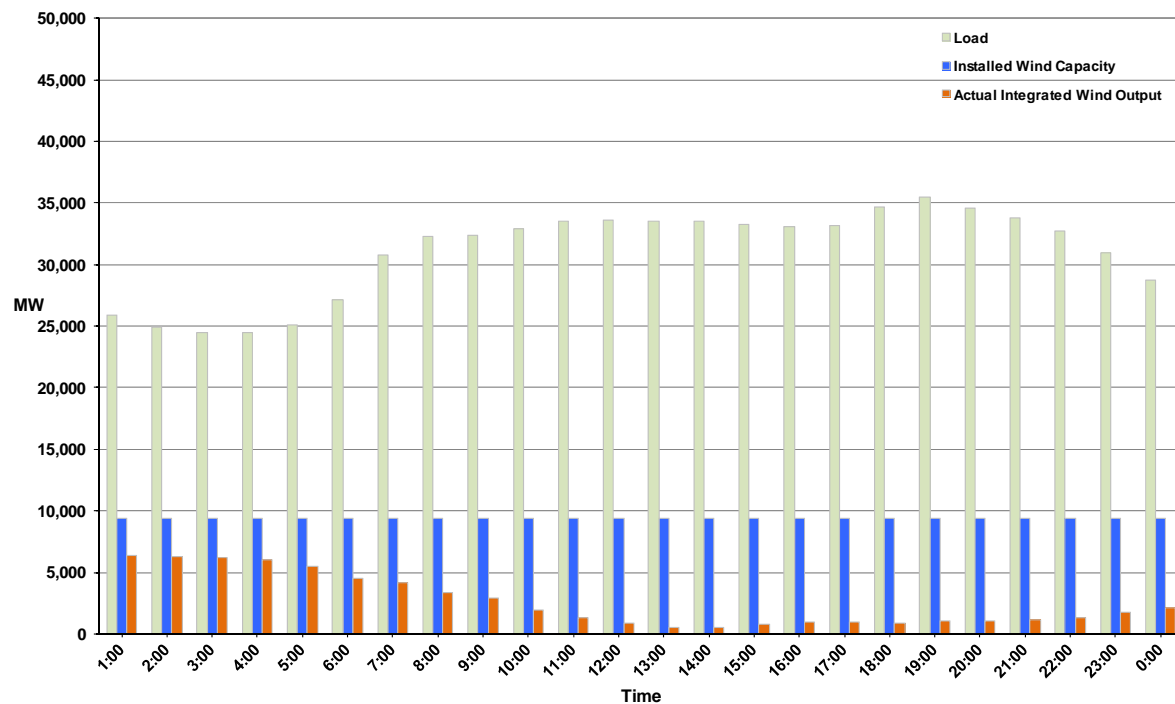




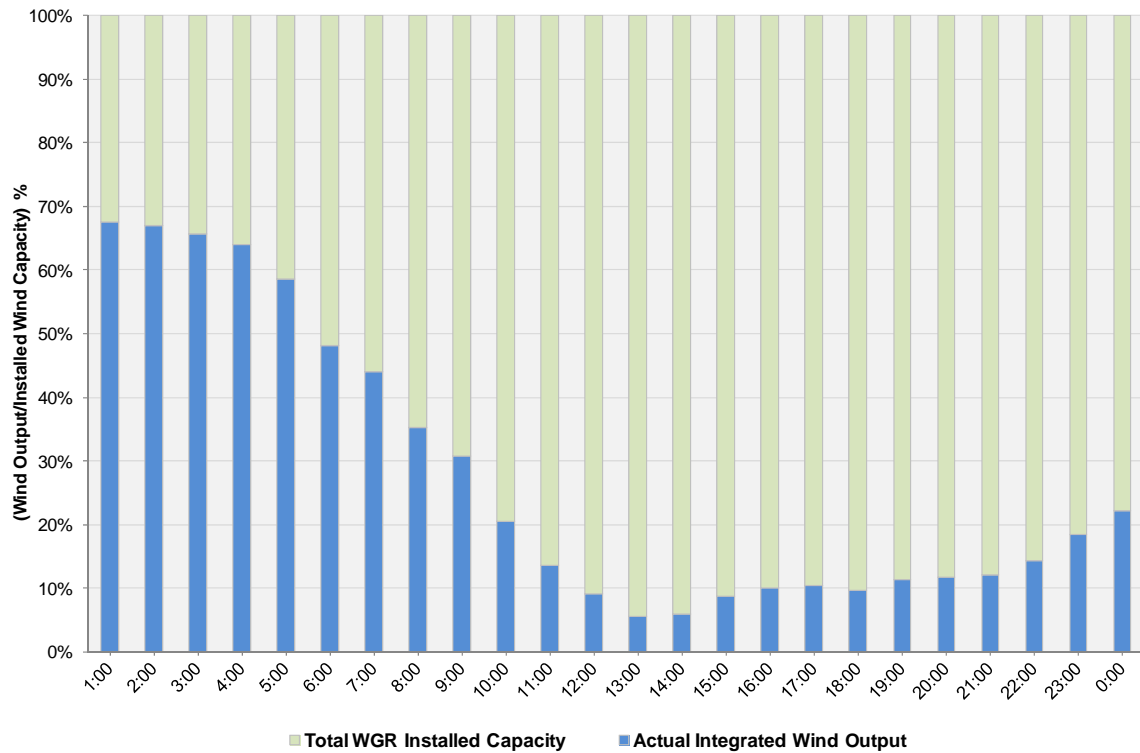
ERCOT Grid Operations Wind Integration Report: 12/02/11

Peak Load	35,477 MW
Load Peak Hour	19
Wind over Peak	1,070 MW
Wind Record 10/07/11	7,400 MW
Max Wind Value	6,486 MW
Wind Peak Time	00:01
Wind Integration %	24.48%

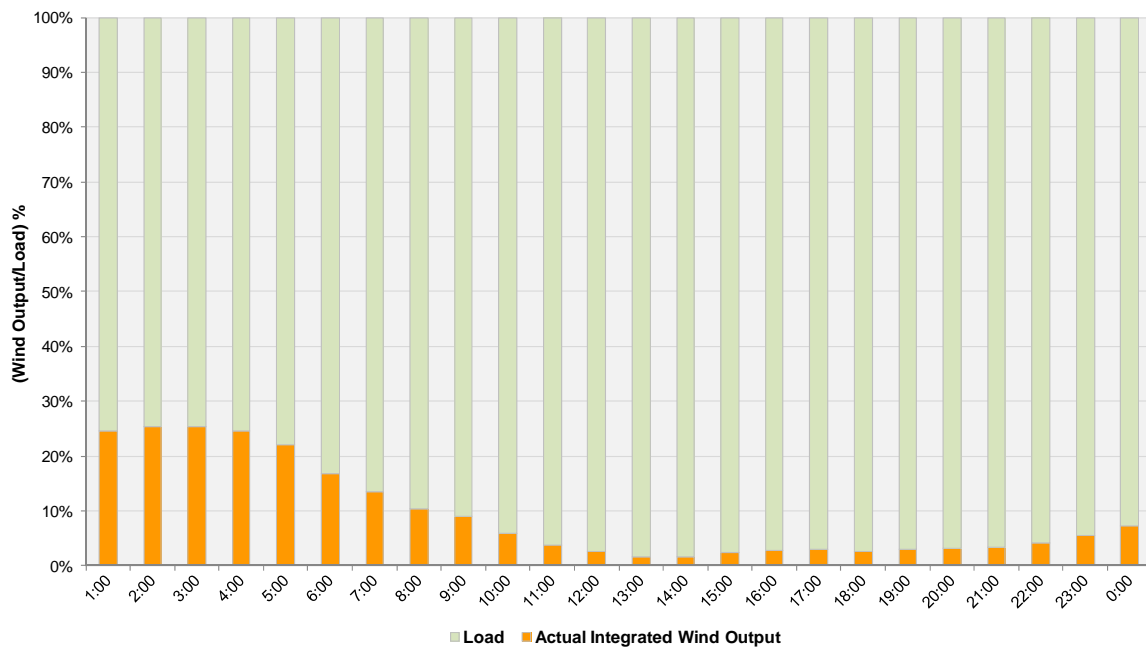
**Hourly Average Actual Load vs. Actual Wind Output
12-02-2011**



Actual Wind Output as a Percentage of the Total Installed Wind Capacity
12-02-2011



Actual Wind Output as a Percentage of the ERCOT Load
12-02-2011



ERCOT Load vs. Actual Wind Output 11/25/2011 - 12/2/2011

